



2024 Altrusa Home & Garden Ramble

1. Rachel Bell HOUSE & GARDEN 69 RAEBURNE STREET, TE AWAMUTU



This small 1940s bungalow was bought by its owner 8 years ago and has been cleverly and colourfully decorated to enhance its art deco style. Clever use of items purchased or redecorated by the owner leaves one anticipating a surprise around every corner. The colourful quirky little garden compliments the owners clever use of colour inside the house. The front hedge is a great feature, with 5 different hedges making it up. Along the side there are espaliered apple and plum trees and grafted lemon and lime in pots. The front garden has been levelled and retained allowing for colourful garden furniture and pots. A golden elm provides shade and the standard camellias, height and colour. A lovely garden to give you wonderful ideas of how to use a small space.

On street parking.

ANDY REA
 Licensed Building Practitioner
 New Homes . Renovations . Decks
 021 077 3803
 andy@aprbuilding.co.nz

BOOK & SHOP ONLINE
 www.teamseven.co.nz

teamseven
 HIGH FASHION HAIR

238 Alexandra St
 Te Awamutu
 07 8716583

DEANE TUCKER FENCING

- Residential Fencing - Post & Rail -
- Farm Fencing - Yards & Cattle Ramps -

027 827 1027 | deane@dtfencing.co.nz
 www.dtfencing.co.nz

2. Rosalie & Gordon Rea HOUSE & GARDEN 104 GATEWAY DRIVE, TE AWAMUTU



This home was planned and architecturally designed by the owners and their son Andrew (APR Building). It was designed to suit the site and is a welcoming, comfortable and easy home to live in. It is now 18 months old with indoor, outdoor flow onto the patio giving wonderful views out to Mt. Pirongia. The gardens are a work in progress.

On street parking.

The Painting Lady

CLAIRE ROIGARD | OWNER & PAINTER
 clairoigard@gmail.com 021 170 2717

Transforming your interiors into a masterpiece

Aunties
Laundromat

Self service Laundromats, modern, sparkling clean

Te Kuiti 80 Taupiri Street
 Leamington 112 Shakespeare Street
 Te Awamutu 42 Rogers Place

OPEN 7 DAYS • 5am - 10pm
 0274 790 273 or 027 871 8000

3. John Pettman & Lisa Hamilton HOUSE, GARDEN & MORNING TEA 39 MOXHAM ROAD



The castle was built & garden designed in 2004 by Helen and Howard Bright who had a love of castles dating back more than 20 years. Built over 4 floors, the entry foyer sets the scene and leads to an open plan kitchen with dining areas, sun and family rooms. Featuring a large wood burner, flagstone paved floors and redwood timber ceiling. This area opens out onto a spacious deck with a huge brick open fireplace overlooking the lovely garden – perfect for alfresco dining. The beautiful timber staircase leads to the second level which hosts a living area, office and master bedroom. The third level offers another living space and two spacious bedrooms and the fourth level two more gorgeous bedrooms and living area.

Access to the roof offers mesmerizing 360 - degree views, with the added bonus of an outdoor bath- tub.

Spread over a generous 4980 square metres, the garden invokes memories of the tales of old, set amongst the most charming English style country garden. The current owners of 'The Castle' have poured an enormous amount of energy into restoring this garden to its former glory, and, along with a team of gardeners, have recreated an enchanting landscape for all to enjoy.

On street parking. Funky George Ceramics for sale.

Morning tea \$5pp supporting Food Forest.

Vayle Hammond
Director/Agent
AREINZ Licensed Agent REAA 2008
vayle@waiparealestate.nz
027 226 9532
we put you first
firstnational
REAL ESTATE

4. Ted & Lynne Gerritsen LIVING & OUTDOOR AREA & GARDEN 42B MOXHAM ROAD, TE AWAMUTU



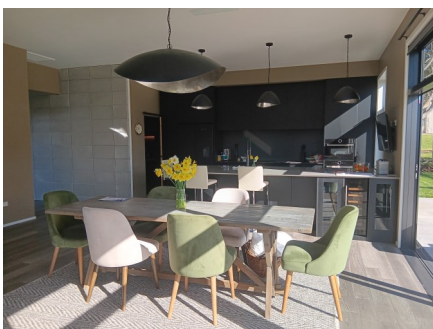
The owners purchased this ten- year- old property (9000m2) 3 ½ years ago and have done extensive renovations and landscaping. On entering the property, you will walk up through an avenue of stunning maple trees that open up to the house which looks out to beautiful views of Mount Maungatautari. The gardens are built up and protect the house, making it very sheltered from the weather. It is very lush with many queen palms that give it a tropical resort vibe. There are many trees and shrubs that attract tui's, swallows, finches, and others. The backyard oasis has a tranquil fountain and sweeping stairs that go up to raised garden beds with a small greenhouse. On leaving the property you are welcome to walk down through the orchard of over 20 fruit trees established over 3 years.

Parking around the gate or on Moxham Rd and walk up to the house.

Disability parking at house.

FLYAWAY
OFF-SITE, AUCKLAND
AIRPORT PARKING
24HR FREE
SHUTTLE
3 Verissimo Drive, Mangere, Auckland
BOOK NOW
0800 77 66 99
or 021 431 823 *All cars stored at the one site
www.flyaway.co.nz parkit@flyaway.co.nz

5. John & Lynne Dill HOUSE 265 GREENHILL DRIVE, TE AWAMUTU



Built on the Green Hill Homestead block, home to the Taylor Family, John's ancestors. This home was completed in August 2023 by Luke Designer Homes. The grey/black exterior is a concrete block and coloursteel combination. This colour palette continuing in the kitchen built by NT Joinery and featuring a scullery and very handy wine fridge for entertaining outside in the BBQ area. Features include a concrete block feature wall and glass panelled doors to the walk- in wardrobe. Interiors by Nic & Me with Resene Flintstone and black throughout the living and master bedroom. Fabulous views over Te Awamutu and all three mountains. On street parking.

6. David & Rosalie Coupland HOUSE AND GARDEN 415 GREENHILL DRIVE, TE AWAMUTU



This stunning home was built in 2021 and was designed by the owners and Urban Homes to provide magnificent views of Pirongia and Kakepuku mountains. The inside of the home is an eclectic mix of designs and themes, mixing antique and modern, a variety of woods, with Italian and farmhouse tinges. There is also a great variety of art on show.

The kitchen was built by De Rossa kitchens in Matamata and features lights (dents and all), from an old warehouse in Auckland. The large authentic antler light was made by Matt Hall of Hauturu with deer antlers from his property.

The outside of the home has a number of decks which enable the owners to indulge their love of outdoor living. Along with a spa, there is also an outdoor shower, a feature which the owners fell in love with while on a holiday in Vanuatu.

The owners are passionate about vegetables and grow most of their own. There is a native garden to the south of the house. The Mall below the house is planted in fruit trees and flower gardens for picking. Looking out towards Pirongia, the garden features a tree stump obtained from Potts farm on Ngaroto Rd many years ago, and the stunning bird on the post and reeds were designed and made by Joe Denny of Metalworks in Wanaka. On street parking.



Pauline Love

Ray White - Te Awamutu

021 155 4689

Discover the true value of your property

RayWhite



Milking Systems
Effluent Management
Refrigeration
Water Reticulation
Stainless Fabrication

Milk with confidence

7. Jill Mes GARDEN ONLY 149 DALTON AVENUE, TE AWAMUTU



A very quiet and private garden. Enjoy the sound of canaries singing and the soothing sound of the water fountain whilst you stroll around this rustic garden. Both raised vegetable beds and perennial garden beds surround the lawn. Full of quirky garden art, perennials mostly in the form of shrubs and a multitude of colourful pots and containers. Abundant metal work, a palm stump planted with succulents and several water features make up this eclectic garden. A delight to wonder around and enjoy. Jill is open to any advice or tips on gardening. On street parking.

8. John & Marg Ritchie GARDEN & MORNING TEA 201 LEGER GROVE, TE AWANUTU



This parklike mature garden is made up of perennials and a variety of trees- Kauri, Rimu, Paulownia, Magnolias, Maples and a Kowhai. Nine years ago the extensive bank had a makeover and now boasts rhododendrons, camellias, ferns, clivia and hellebores. Wandering paths lead to secluded seating areas and a gazebo amongst the trees. Planted for easy care with views over the surrounding countryside this is a tranquil garden with the sounds of the flowing water ball fountain and native birds. Don't miss Marg's fence with its row of fun pottery chickens, for sale on the day!

A beautiful space to wander around and enjoy a morning cup of tea

Morning tea \$5pp supporting Riding for the Disabled.

Toilet stop.



Gallie Miles
— LAWYERS —

9. Viki Bryant GARDEN & SHED 12D WHAREPUHUNGA ROAD, OTOROHANGA



This rustic garden has been developed over the last 20 years and is surrounded by beautiful mature trees. The owner is adept at making use of whatever she might find, and the garden is full of interest with plantings in various containers including an old tool chest and stumps. There is a mixture of pots and garden ornaments which clearly show the owners artistic talent. There are a number of surprises as you wander down various paths, a beautifully planted shady area and an old bathtub amongst them. Viki's leadlight workshop will be open to view.

Ample parking in back paddock.

Viki's Leadlights, plants, produce & crafts for sale.

FINDEX

We are an innovative financial advisory service provider with a client-centric focus. We pride ourselves on an integrated service offering, giving you the peace of mind that comes with knowing your financial and lifestyle goals are being worked on.

Contact our Te Awamutu team on (07) 871 3176 to discuss how we can help you.

Campbell Lane
BUSINESS & CASUAL WEAR 4 MEN

204 ALEXANDRA STREET, TE AWAMUTU

Sharlene Campbell

Phone 07 871 7170 Mobile 021 031 0097
campbelllane.co.nz



Why not take the opportunity to call in to Alpha Lavenders as you pass along Allen/Brotherhood Roads en-route to venues 9 or 10. Their shop will be open with lavender products for sale.

10. Colleen & Chris Kaelin HOUSE 400 ARAPUNI ROAD, KIHIKIHI



Having lived on the property for a number of years, Colleen and Chris made the decision to build a new home. The environment is a working farm with a Simmental Cattle Breeding unit and maize grain and maize silage also grown. Chris had a specific design in mind. Building with concrete walls, concrete floors and large windows were all part of the concept idea. We consulted David Peehikuru from Architectural Design in Te Awamutu who drew up the plans and made the vision of the new build come to life. David was also engaged as project manager. Local Builder Alan Bates completed the build. All the Trades professionals and building supplies are local to Te Awamutu. The result is a home made with two large insitu concrete walls and large glass windows. Plywood ceilings in the kitchen, living and second lounge bring a sense of spaciousness. The original Lockwood home was moved to another title with trees originally planted 40 years ago and some of the original garden enhancing the new build. Building through Covid was a challenge, with down time and scarcity of building materials adding to the frustration. David Peehikuru has done an amazing designing and project managing and has the builder, Alan Bates.

We love the house and it is a pleasure to live in.

Julia Empson Interiors will be selling her bespoke Christmas decorations and other small interior items.

Parking in the paddock.

11. Terry & Sharon Glenister GARDEN ONLY 161 FLAT ROAD, KIHIKIHI



Established mature garden with an interesting blend of foliage and flowers. An array of trees, such a kauri, wattle and cherry blossoms, form a canopy over beds of hellebores, shrubs and mixed plantings that border the expansive lawn.

Raised vegetable gardens of strawberries and asparagus along with seasonal vegetable complement the garden.

Cozy Crops wool pellets fertilizer and mulch for sale.

Our major recipients are Citizens Advice Bureau and Kids in Need. The money we raise on the day also supports other Altrusa literacy and community projects.

Thank you to Team 7 and Ruby Rose for their Raffle Donations

